

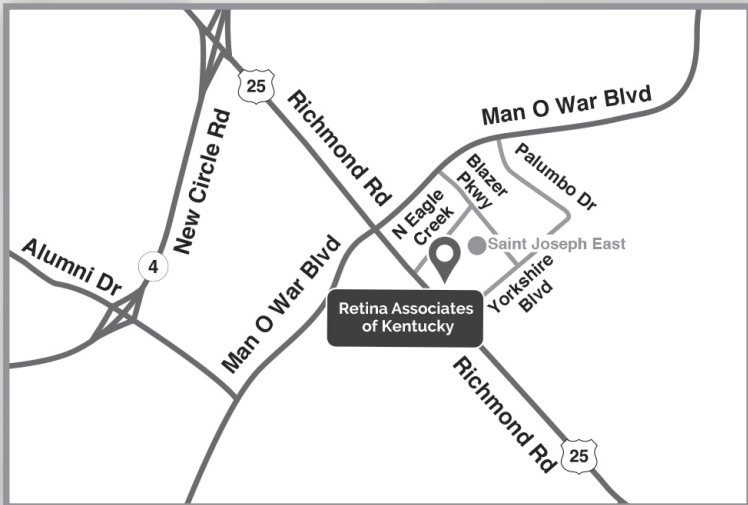


RETINA ASSOCIATES OF KENTUCKY

OFFICE LOCATIONS

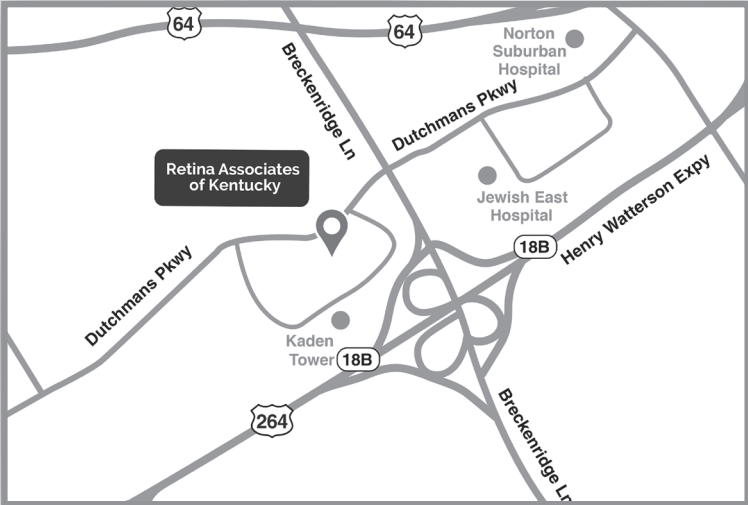
EDUCATION. EXPERIENCE. COMPASSION.

(800) 627-2020 • RetinaKY.com



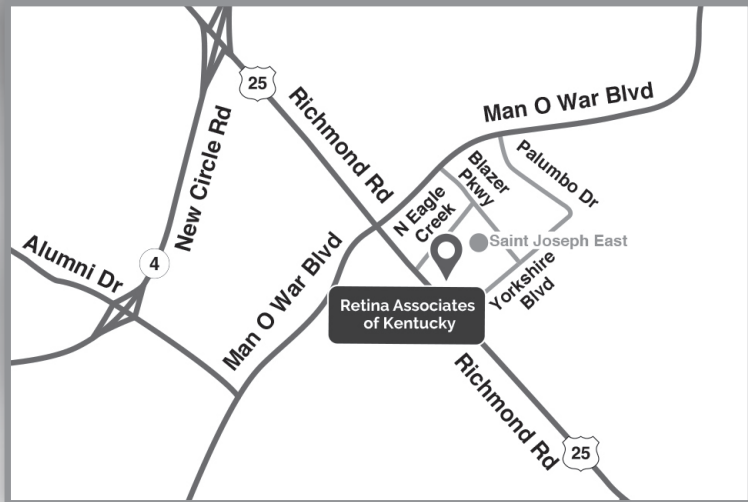
LEXINGTON

Next to St. Joseph East Hospital
120 N. Eagle Creek Drive, Suite 500, Lexington, KY 40509



LOUISVILLE

6450 Dutchmans Parkway, Louisville, KY 40205



LEXINGTON - 4TH FLOOR

Next to St. Joseph East Hospital
120 N. Eagle Creek Drive, Suite 440, Lexington, KY 40509



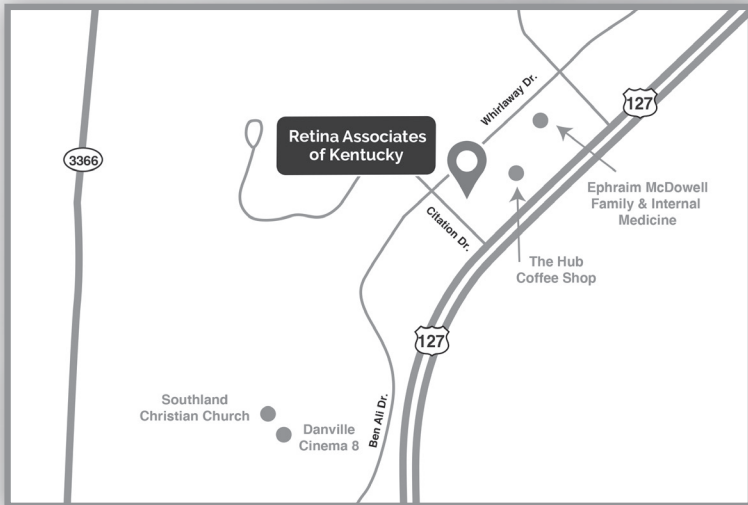
ASHLAND

1700 Winchester Avenue, Ashland, KY 41101



BARDSTOWN

Bardstown Eye Care Center
311 N. Third Street, Bardstown, KY 40004



DANVILLE

418 Whirlaway Drive, Danville, KY 40422

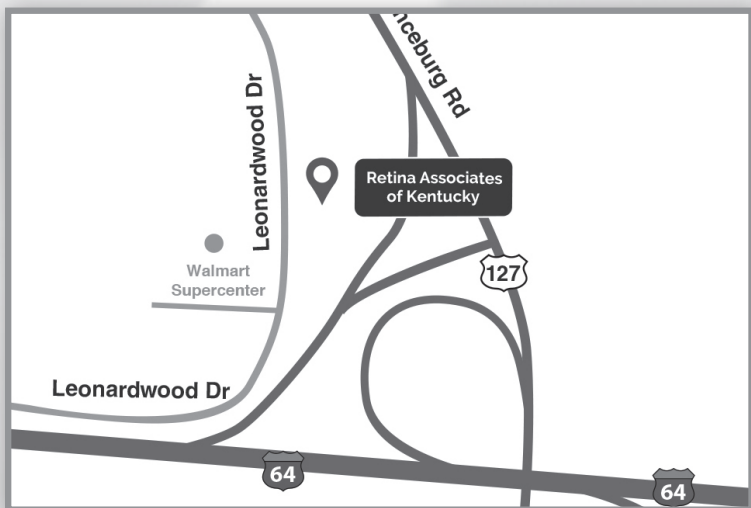


RETINA ASSOCIATES OF KENTUCKY

OFFICE LOCATIONS

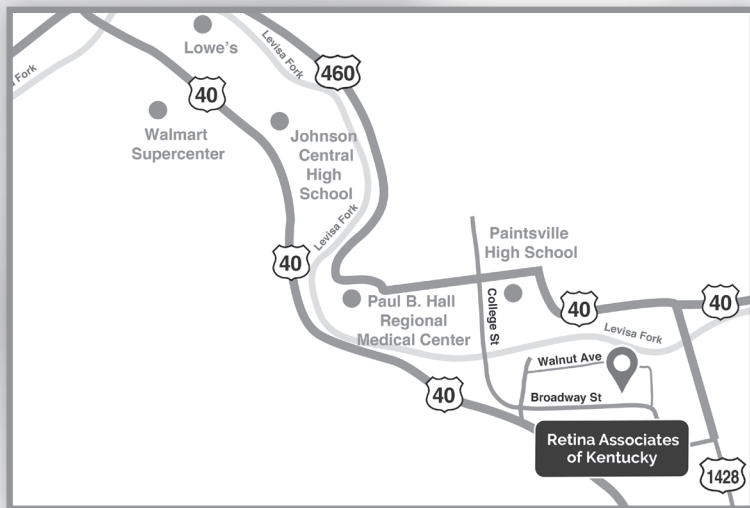
EDUCATION. EXPERIENCE. COMPASSION.

(800) 627-2020 • RetinaKY.com



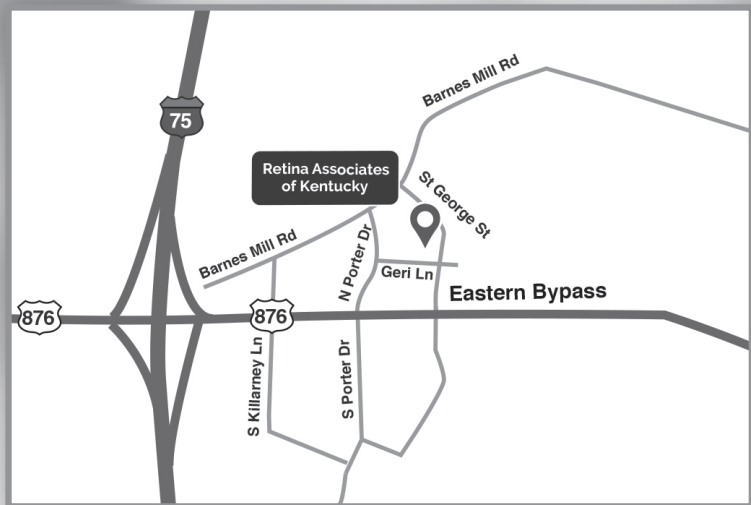
FRANKFORT

315 Leonardwood Drive, Suite 4, Frankfort, KY 40601



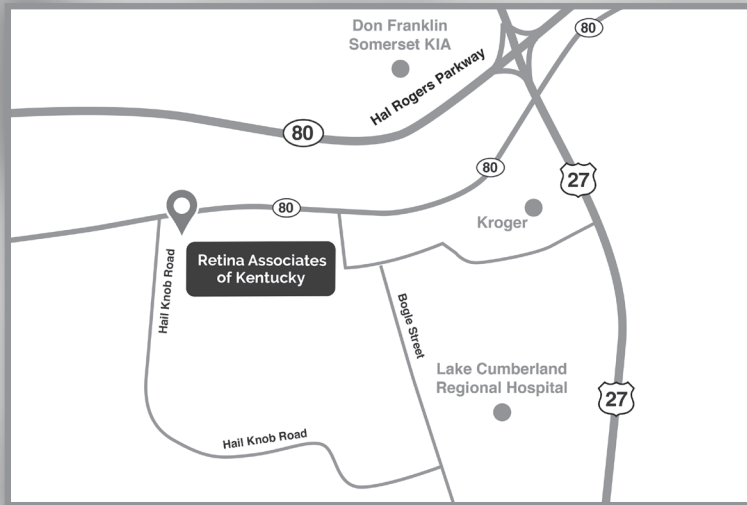
PAINTSVILLE

Highlands ARH Clinic
713 Broadway Street, Suite 201, Paintsville, KY 41240



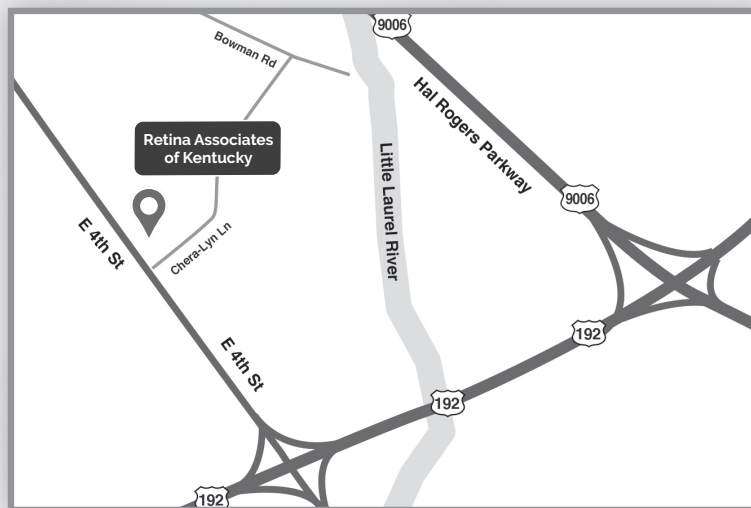
RICHMOND

238 Geri Lane, Suite A, Richmond, KY 40475



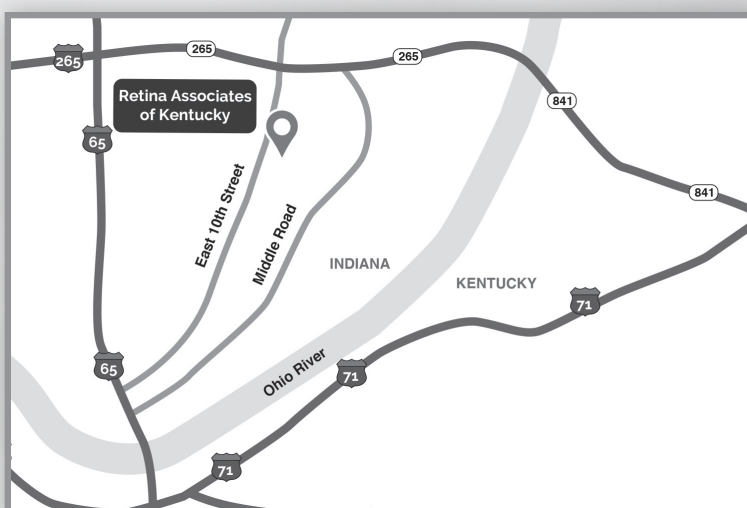
SOMERSET

850 Hail Knob Road, Suite A, Somerset, KY 42503



LONDON

1075 East 4th Street, London, KY 40741



JEFFERSONVILLE, IN

3544 E. 10th Street, Jeffersonville, IN 47130