



RETINA ASSOCIATES OF KENTUCKY

# OFFICE LOCATIONS

EDUCATION. EXPERIENCE. COMPASSION.

(800) 627-2020 • RetinaKY.com



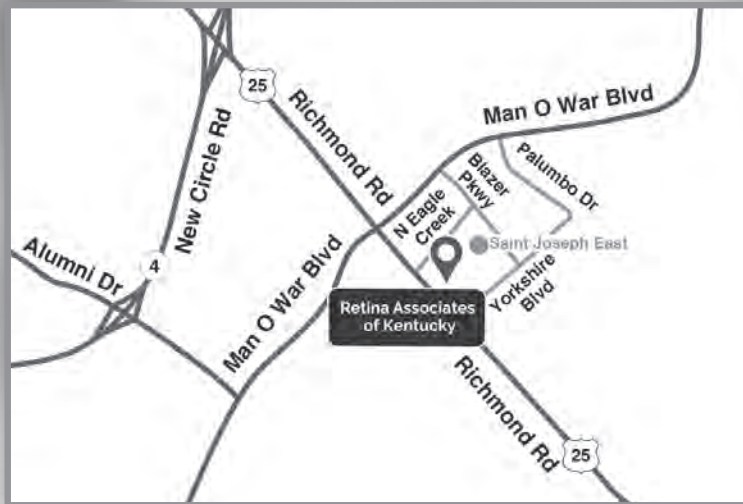
## LEXINGTON

Next to St. Joseph East Hospital  
120 N. Eagle Creek Drive, Suite 500, Lexington, KY 40509



## LOUISVILLE

6450 Dutchmans Parkway, Louisville, KY 40205



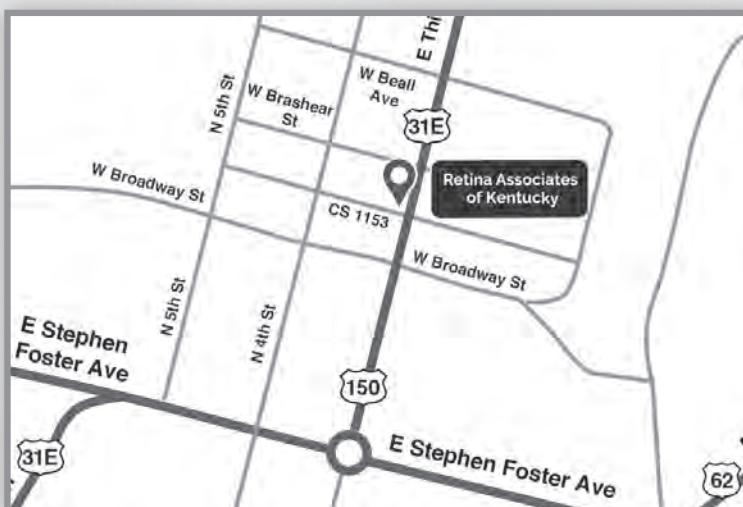
## LEXINGTON - 4TH FLOOR

Next to St. Joseph East Hospital  
120 N. Eagle Creek Drive, Suite 440, Lexington, KY 40509



## ASHLAND

1700 Winchester Avenue, Ashland, KY 41101



## BARDSTOWN

Bardstown Eye Care Center  
311 N. Third Street, Bardstown, KY 40004



## DANVILLE

Eye Associates of Danville  
440 West Martin Luther King Blvd., Danville, KY 40422

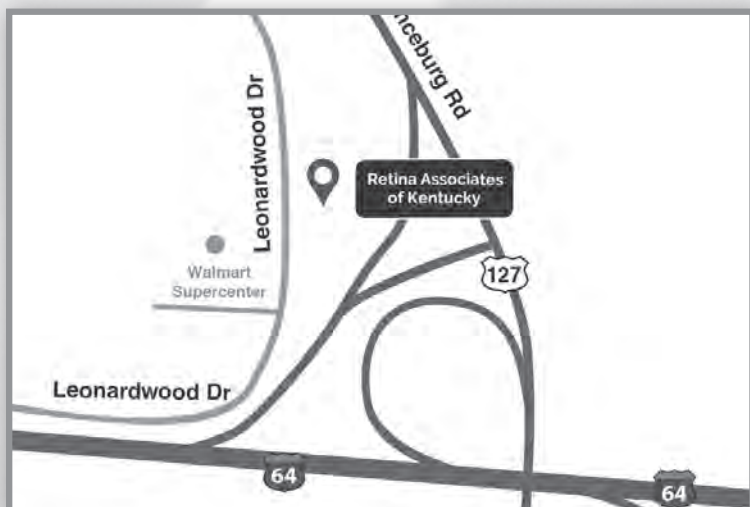


RETINA ASSOCIATES OF KENTUCKY

# OFFICE LOCATIONS

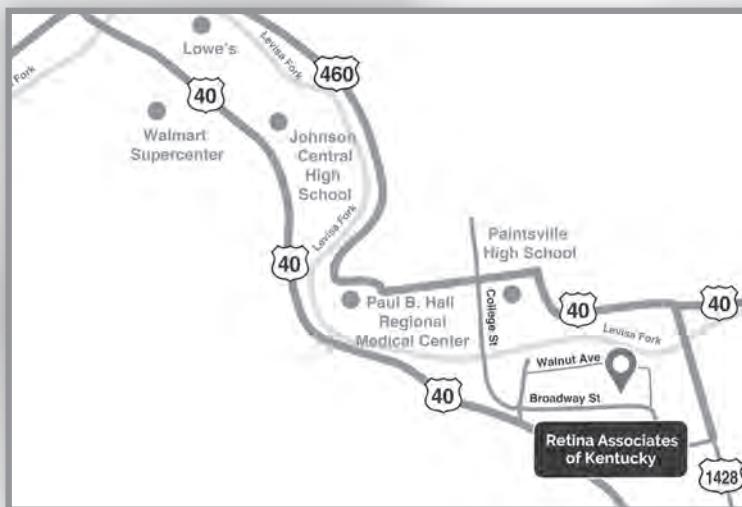
EDUCATION. EXPERIENCE. COMPASSION.

(800) 627-2020 • RetinaKY.com



## FRANKFORT

315 Leonardwood Drive, Suite 4, Frankfort, KY 40601



## PAINTSVILLE

Highlands ARH Clinic  
713 Broadway Street, Suite 201, Paintsville, KY 41240



## RICHMOND

238 Geri Lane, Suite A, Richmond, KY 40475



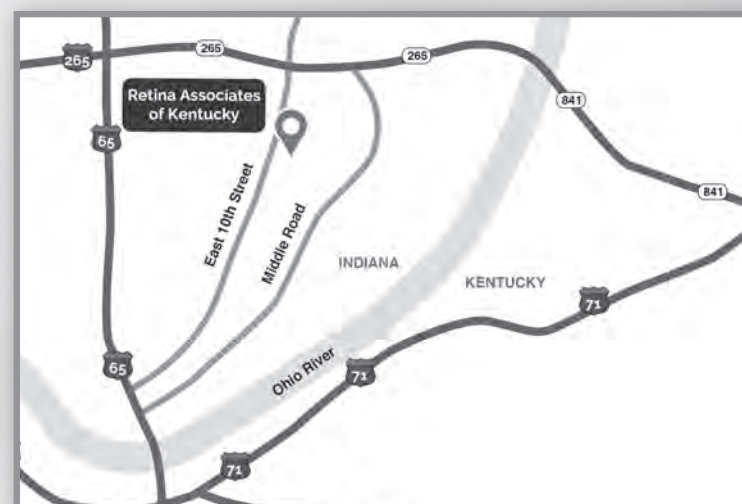
## SOMERSET

850 Hail Knob Road, Suite A, Somerset, KY 42503



## LONDON

1075 East 4th Street, London, KY 40741



## JEFFERSONVILLE, IN

3544 E. 10th Street, Jeffersonville, IN 47130